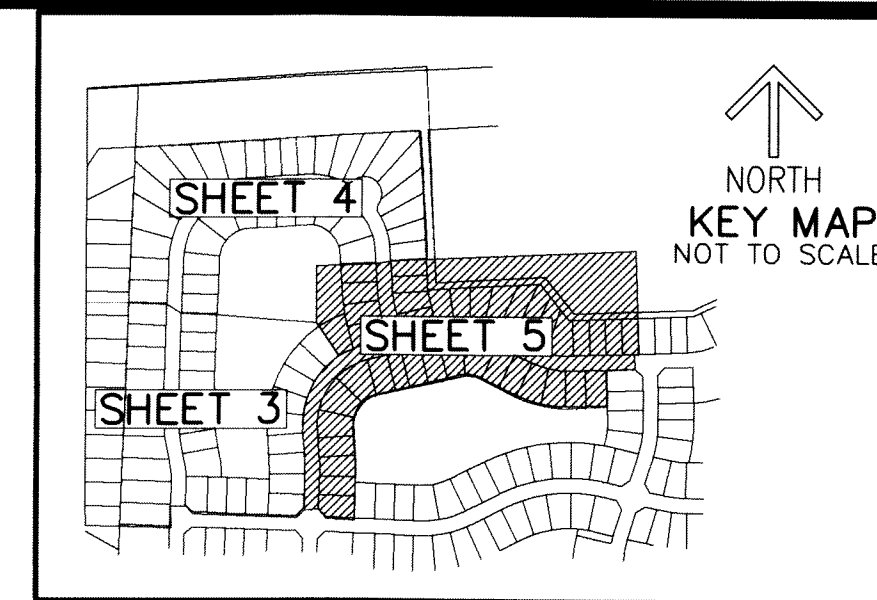


CRESTWOOD NORTH REPLAT TWO

BEING A REPLAT OF TRACT "A", CRESTWOOD NORTH REPLAT, ACCORDING TO THE PLAT THEREOF, AS RECORDED IN PLAT BOOK 125, PAGES 199 AND 200 OF THE PUBLIC RECORDS OF PALM BEACH COUNTY, FLORIDA, LYING IN SECTION 15, TOWNSHIP 43 SOUTH, RANGE 41 EAST, VILLAGE OF ROYAL PALM BEACH, PALM BEACH COUNTY, FLORIDA

THIS INSTRUMENT PREPARED BY
DAVID P. LINDLEY
OF
CAULFIELD and WHEELER, INC.
SURVEYORS - ENGINEERS - PLANNERS
7900 GLADES ROAD, SUITE 100
BOCA RATON, FLORIDA 33434
OFFICE (561)392-1991 FAX (561)750-1452
CERTIFICATE OF AUTHORIZATION NO. LB 3591
JANUARY - 2020

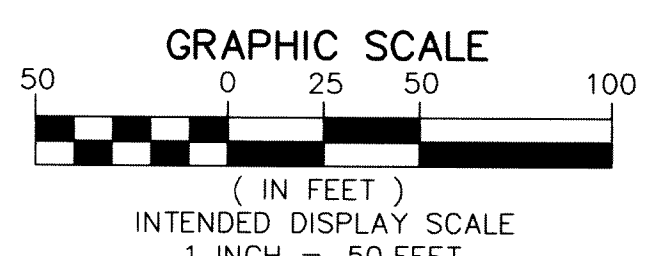
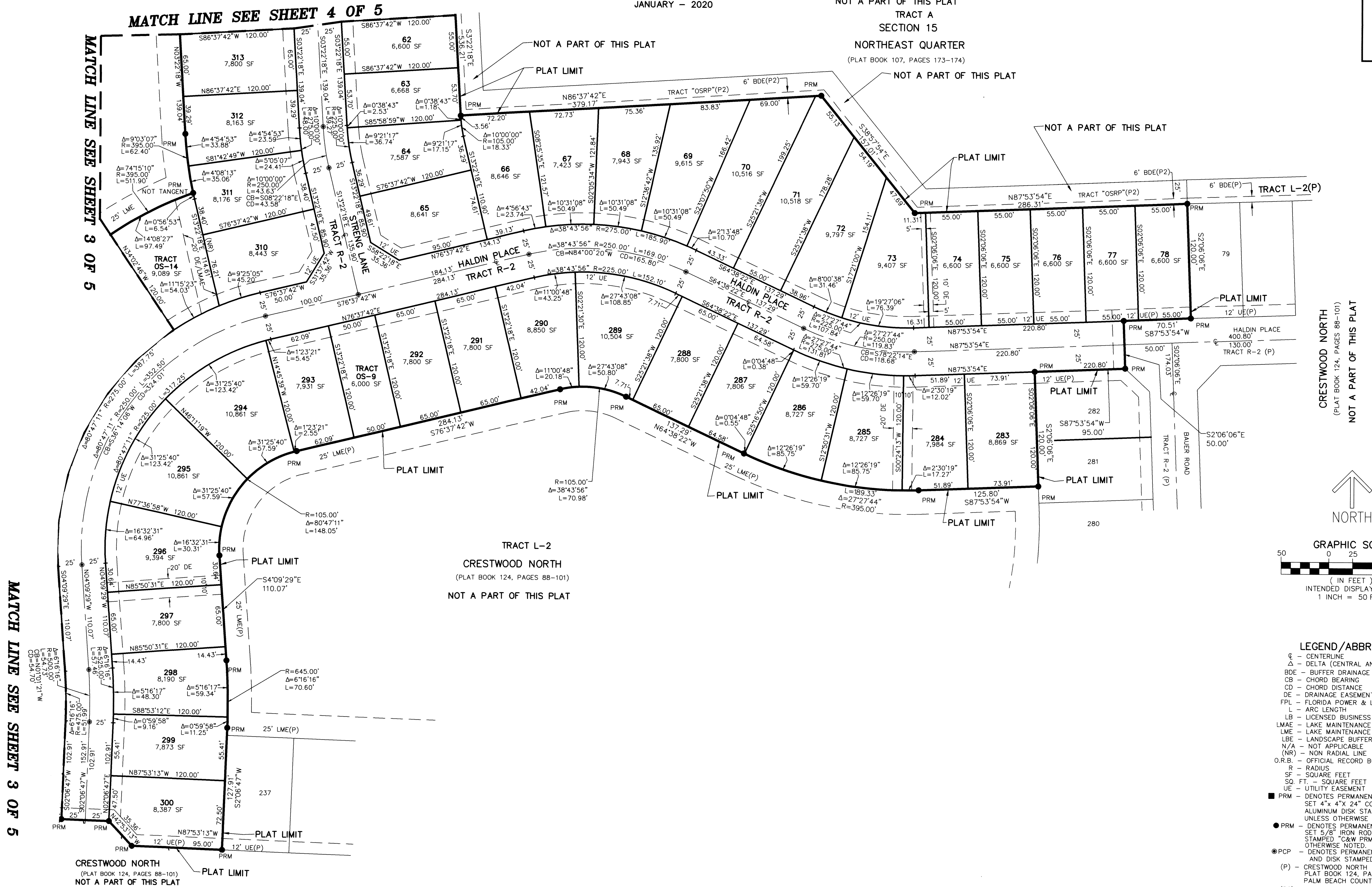


STATE OF FLORIDA
COUNTY OF PALM BEACH
THIS PLAT WAS FILED FOR
RECORD AT _____ M.
THIS _____ DAY OF _____
A.D. 2020 AND DULY RECORDED
IN PLAT BOOK _____ ON
PAGES _____ AND _____

SHARON R. BOCK
CLERK AND COMPTROLLER

BY: _____
DEPUTY CLERK

SHEET 5 OF 5



- LEGEND/ABBREVIATIONS**
- CL - CENTERLINE
 - Δ - DELTA (CENTRAL ANGLE)
 - BDE - BUFFER DRAINAGE EASEMENT
 - CB - CHORD BEARING
 - CD - CHORD DISTANCE
 - DE - DRAINAGE EASEMENT
 - FPL - FLORIDA POWER & LIGHT CO.
 - L - ARC LENGTH
 - LB - LICENSED BUSINESS
 - LMAE - LAKE MAINTENANCE ACCESS EASEMENT
 - LME - LAKE MAINTENANCE EASEMENT
 - LBE - LANDSCAPE BUFFER EASEMENT
 - N/A - NOT APPLICABLE
 - (NR) - NON RADIAL LINE
 - O.R.B. - OFFICIAL RECORD BOOK
 - R - RADIUS
 - SF - SQUARE FEET
 - SQ. FT. - SQUARE FEET
 - UE - UTILITY EASEMENT
 - PRM - DENOTES PERMANENT REFERENCE MONUMENT SET 4" x 4" x 24" CONCRETE MONUMENT WITH ALUMINUM DISK STAMPED "C&W PRM LB3591" UNLESS OTHERWISE NOTED
 - PRM - DENOTES PERMANENT REFERENCE MONUMENT SET 5/8" IRON ROD WITH PLASTIC CAP STAMPED "C&W PRM LB#3591" UNLESS OTHERWISE NOTED.
 - PCP - DENOTES PERMANENT CONTROL POINT NAIL AND DISK STAMPED PCP LB3591
 - (P) - CRESTWOOD NORTH PLAT BOOK 124, PAGES 88-101 PALM BEACH COUNTY RECORDS
 - (P2) - CRESTWOOD NORTH REPLAT PLAT BOOK 125, PAGES 199 AND 200 PALM BEACH COUNTY RECORDS

MATCH LINE SEE SHEET 3 OF 5

MATCH LINE SEE SHEET 3 OF 5

CRESTWOOD NORTH
(PLAT BOOK 124, PAGES 88-101)
NOT A PART OF THIS PLAT

TRACT L-2
CRESTWOOD NORTH
(PLAT BOOK 124, PAGES 88-101)
NOT A PART OF THIS PLAT

NOT A PART OF THIS PLAT
TRACT A
SECTION 15
NORTHEAST QUARTER
(PLAT BOOK 107, PAGES 173-174)

CRESTWOOD NORTH
(PLAT BOOK 124, PAGES 88-101)
NOT A PART OF THIS PLAT

